

Images of RS13 (Antler-scraping) residues

used in Blind Test 1

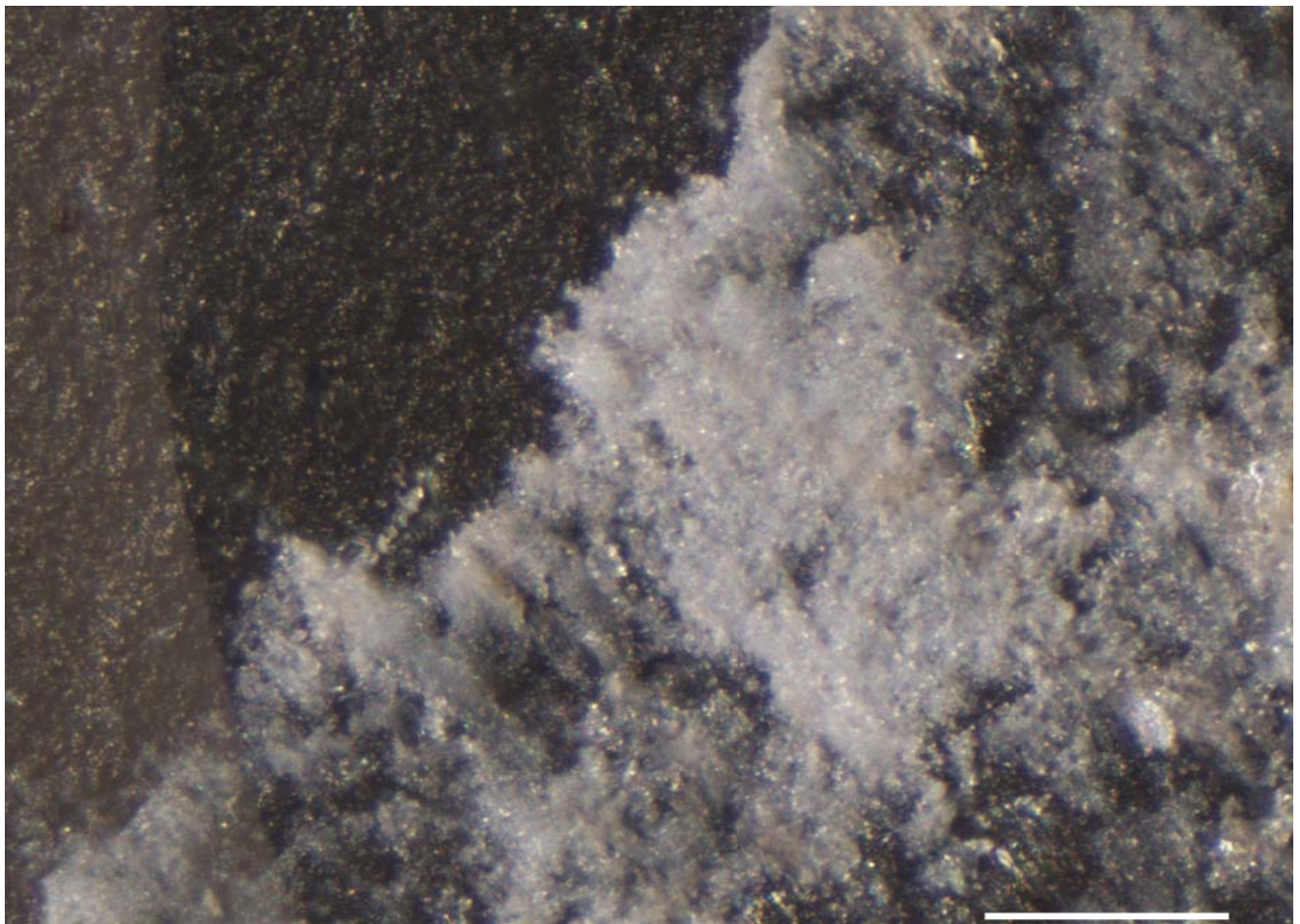
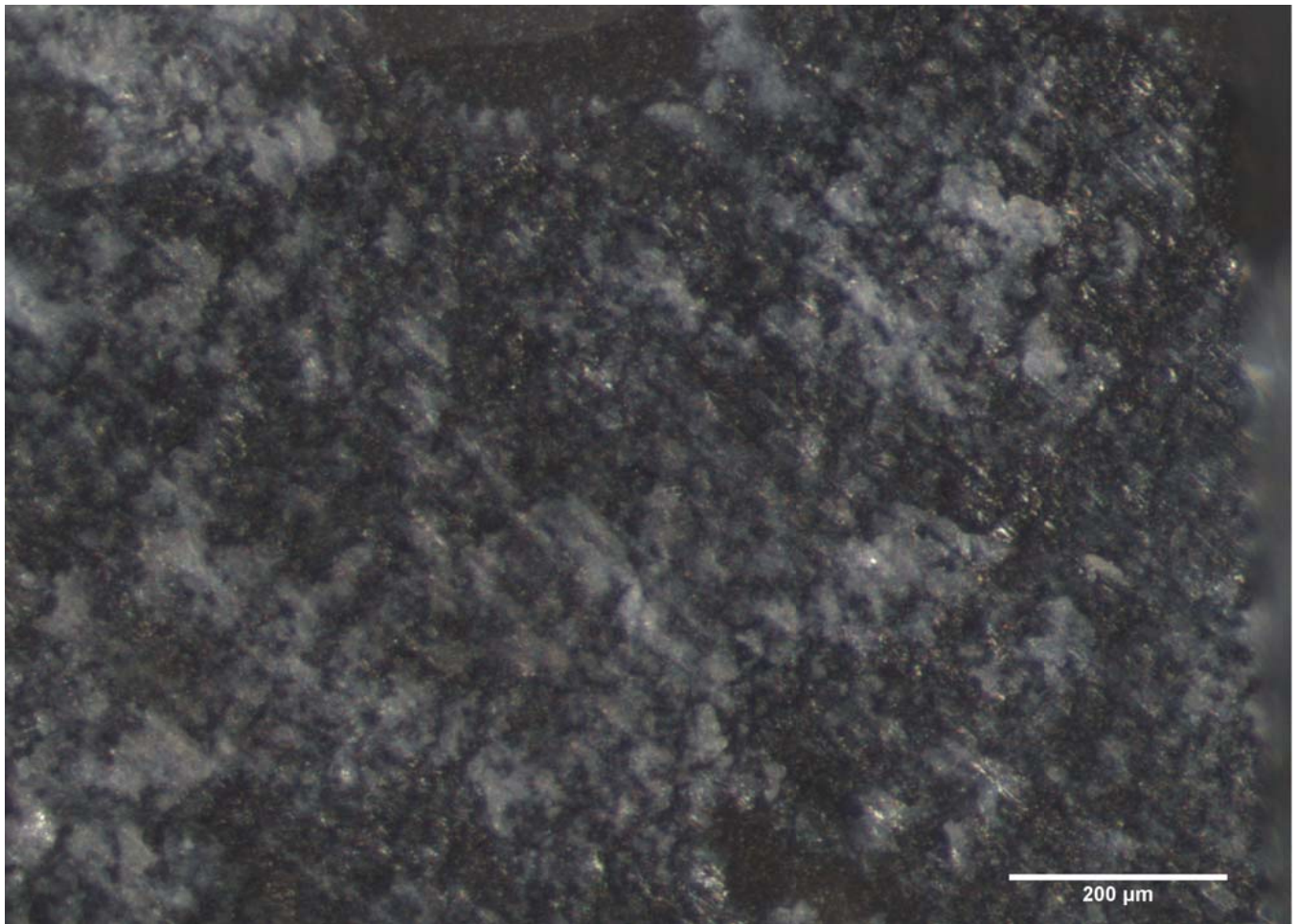
The images published in this pdf are those that were used in the testing portion of the experiment reported in Monnier et al. 2012, *J. Arch. Sci.* For questions, please contact Gilliane Monnier at monni003@umn.edu.

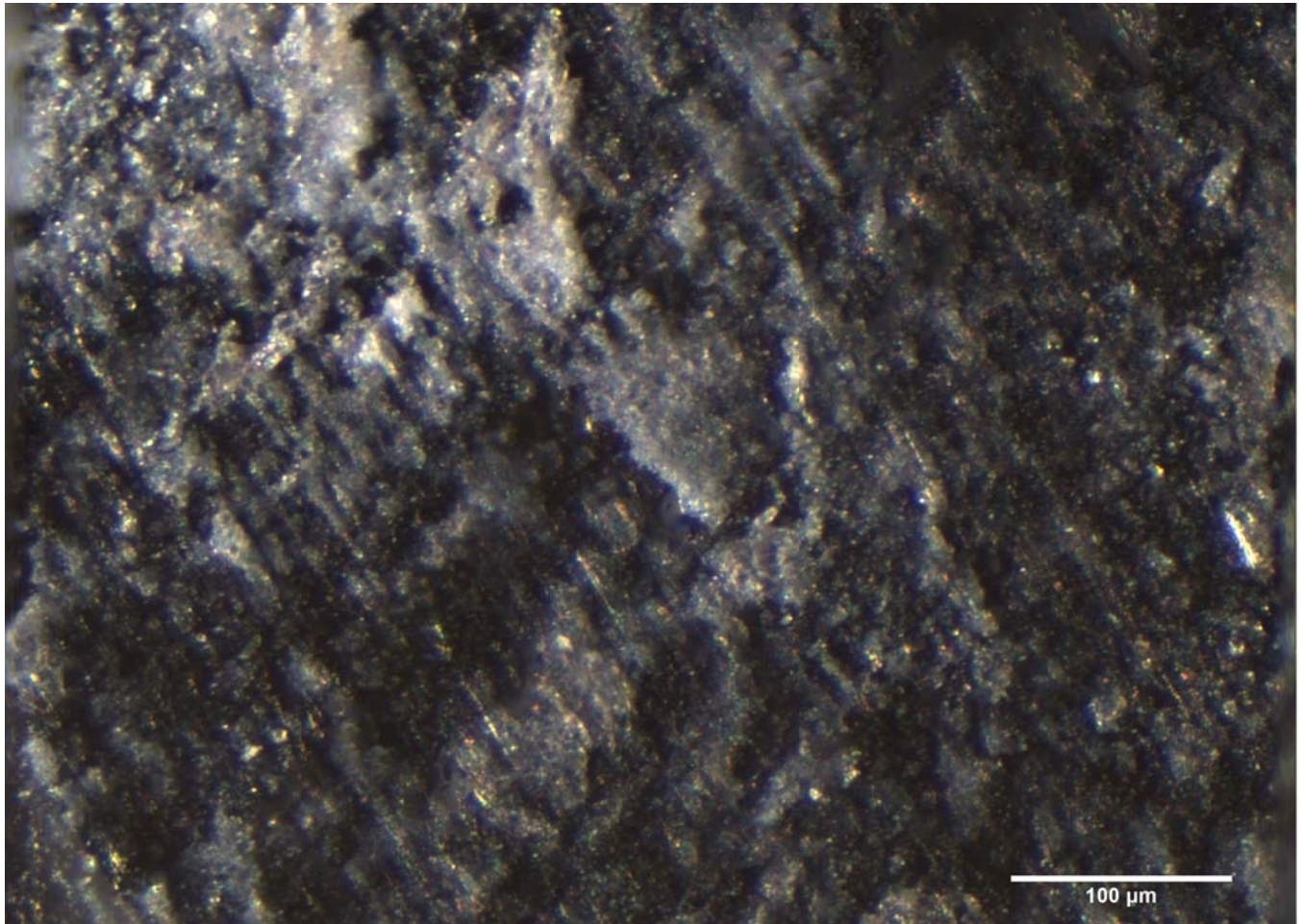
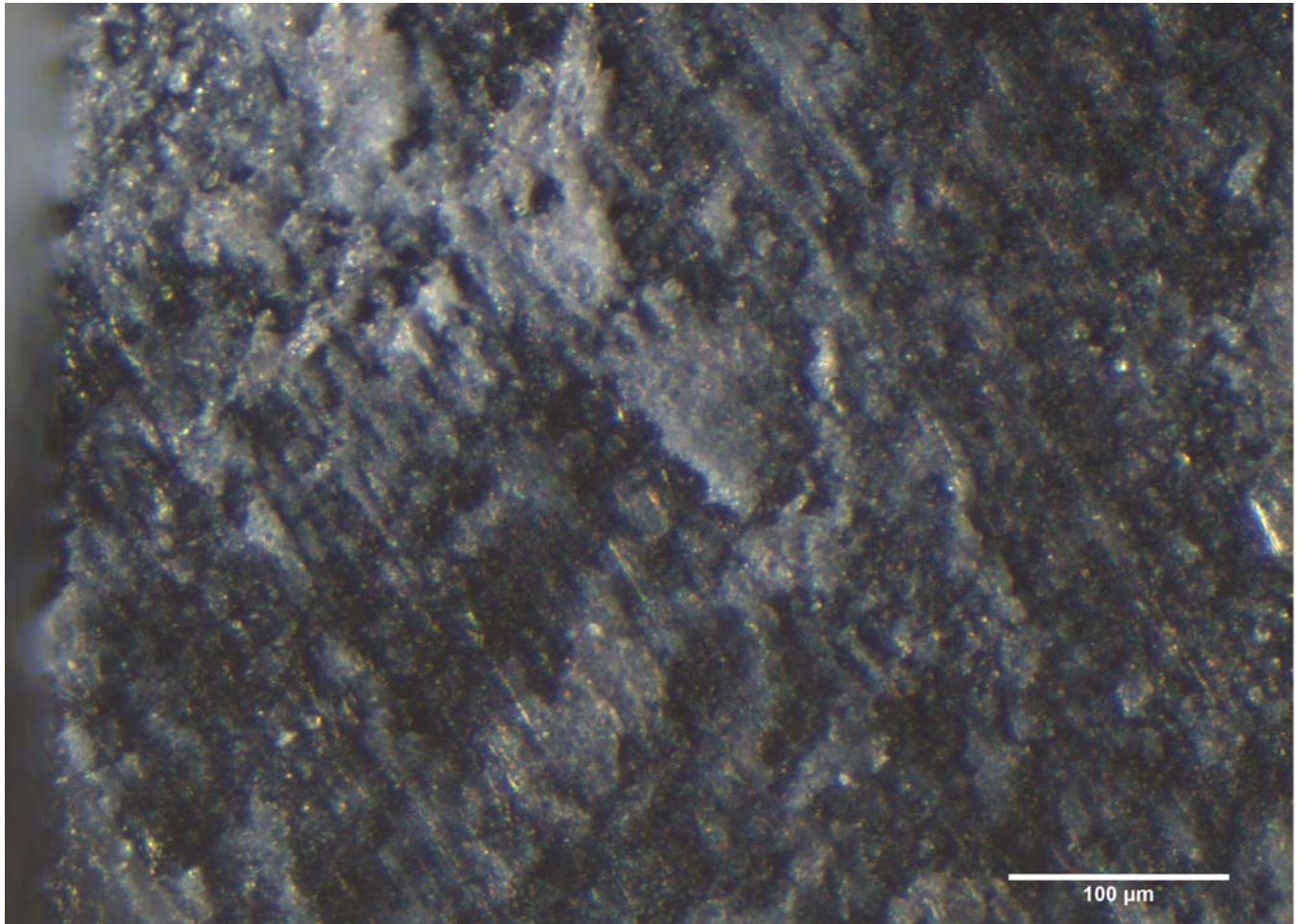
Naming conventions: 'RS' = Residue Study; 'D' = Dorsal side; 'V' = Ventral side; 'a', 'b', etc. = residue number.

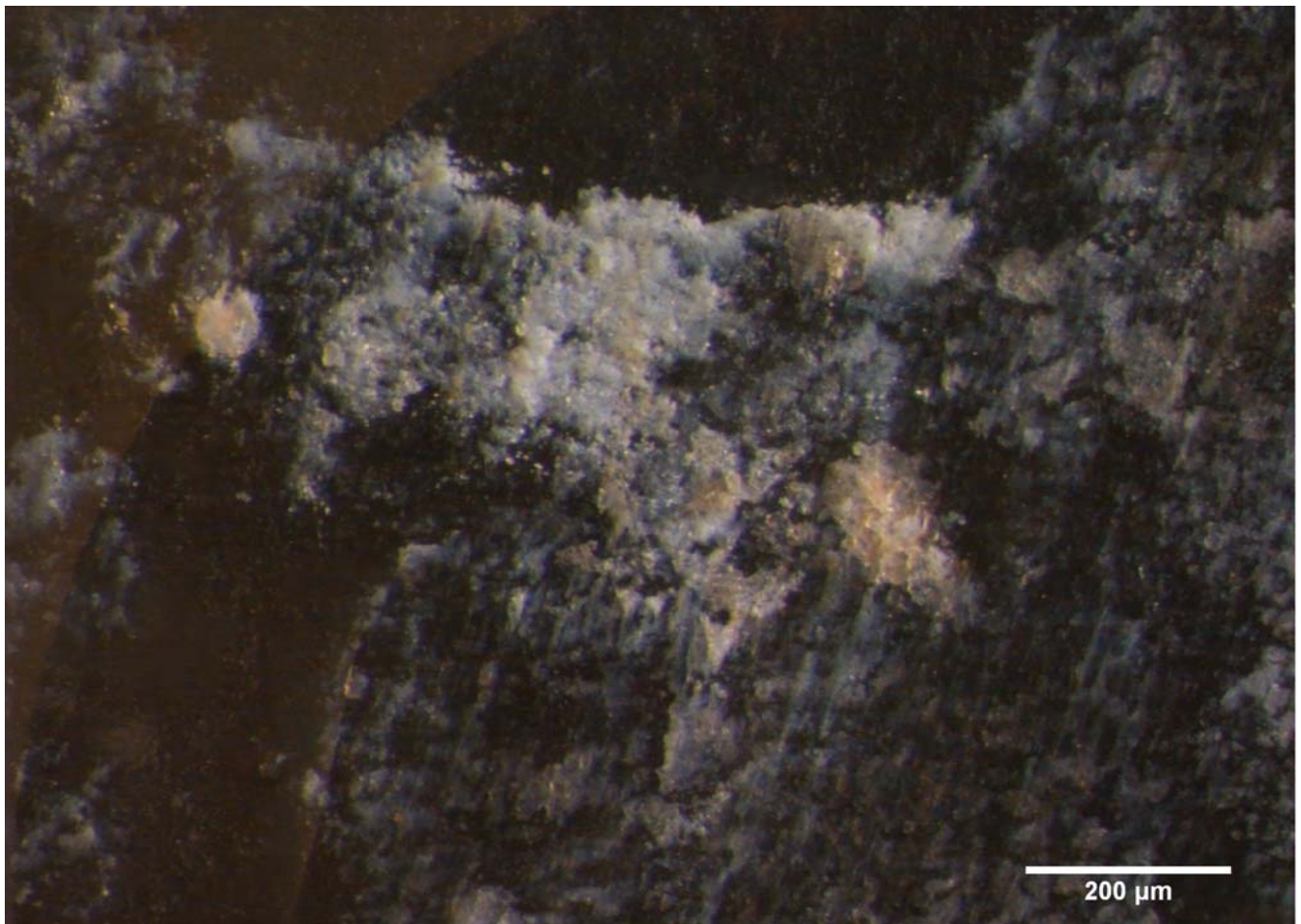
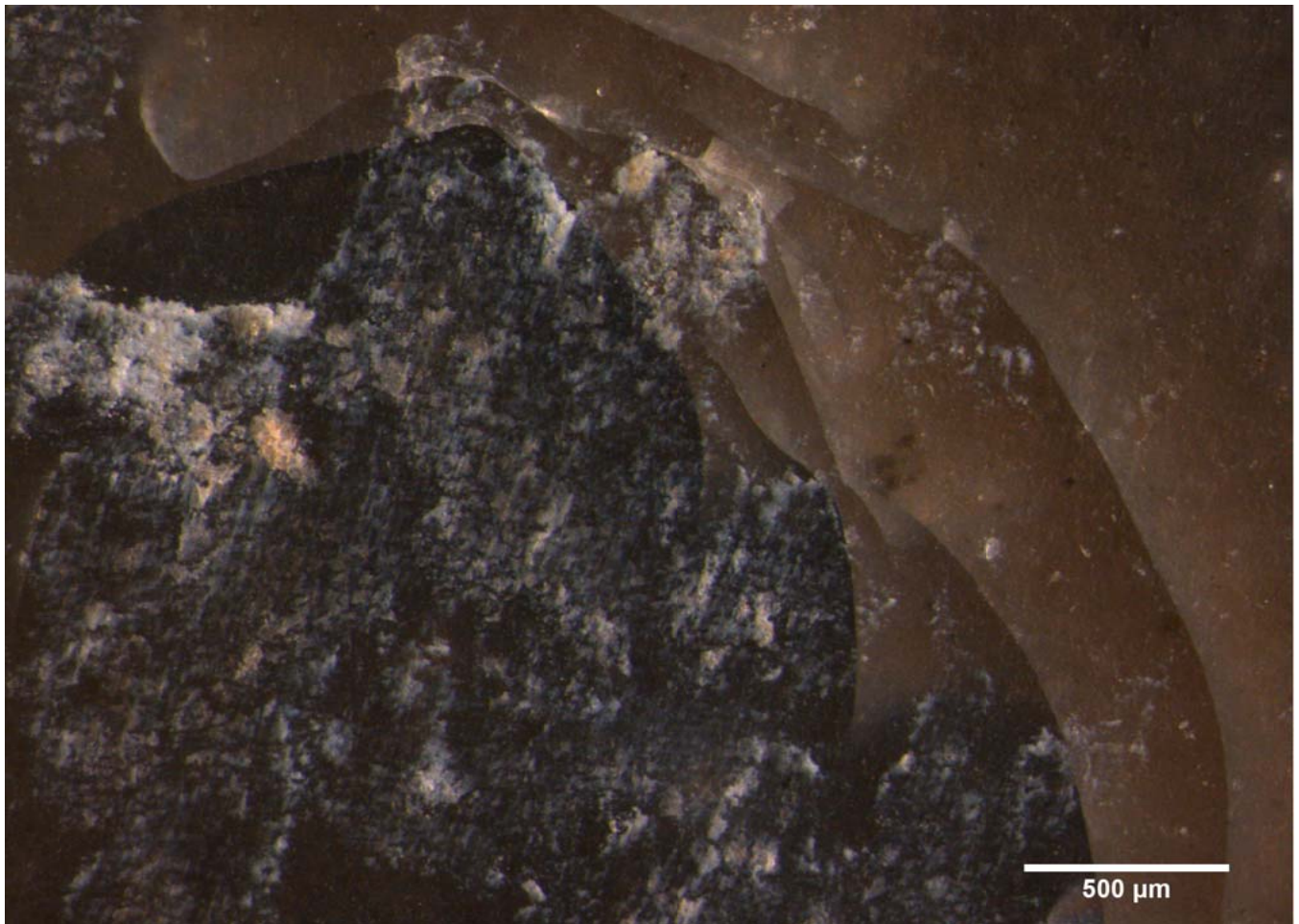
For example, "3Db" refers to tool RS3, residue "b" on the dorsal surface.

Blind Test 1

Residue 13Da

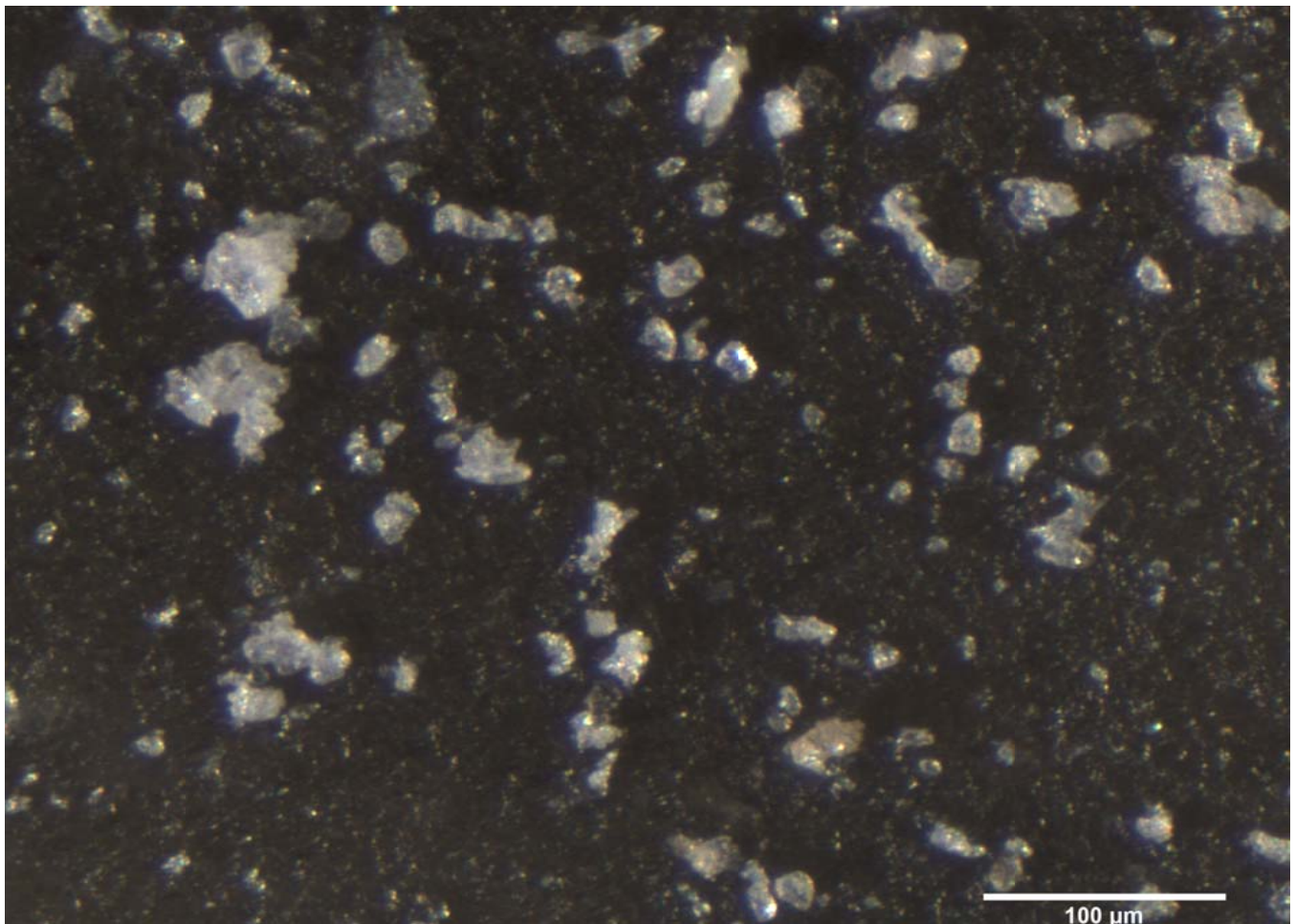
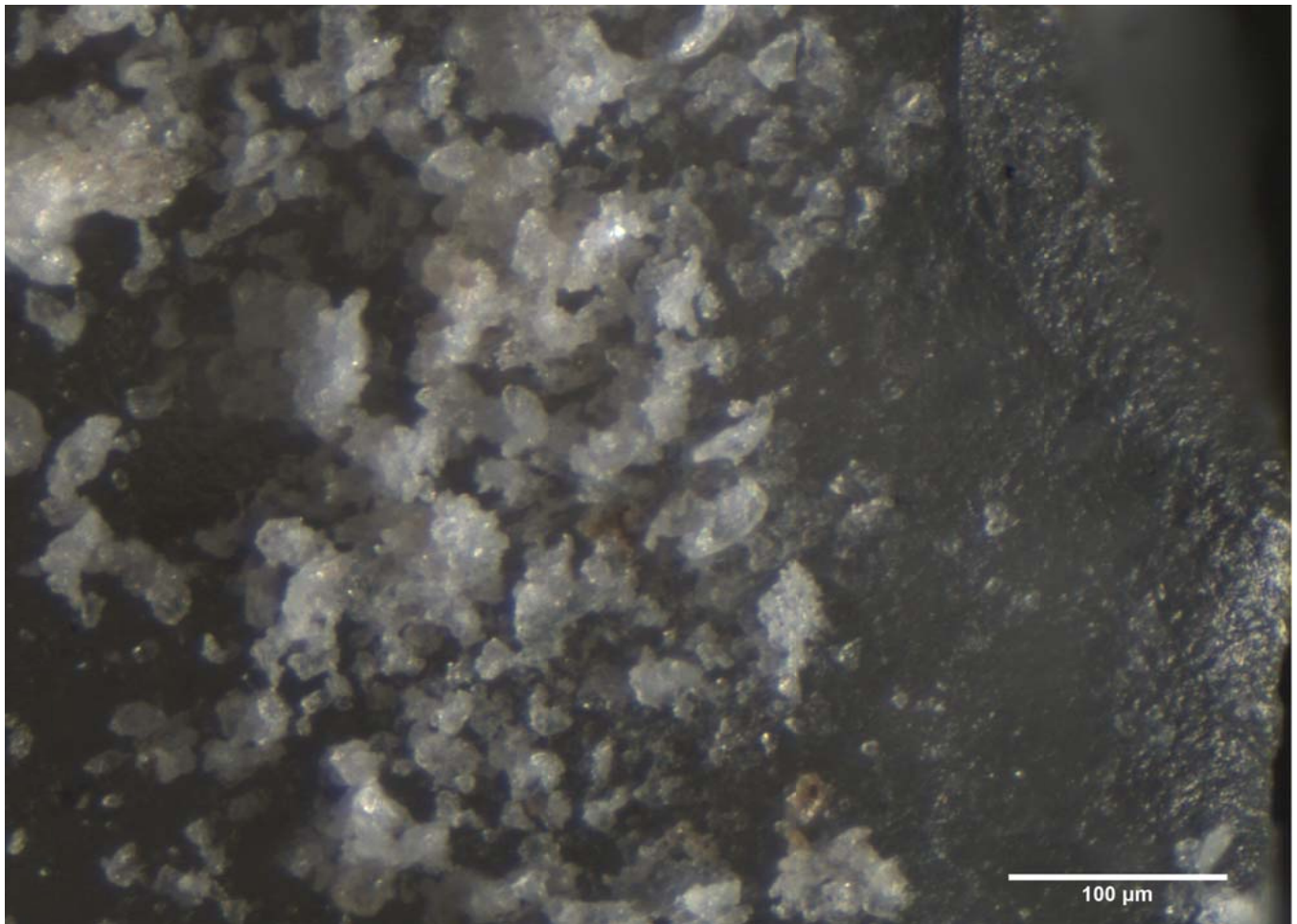


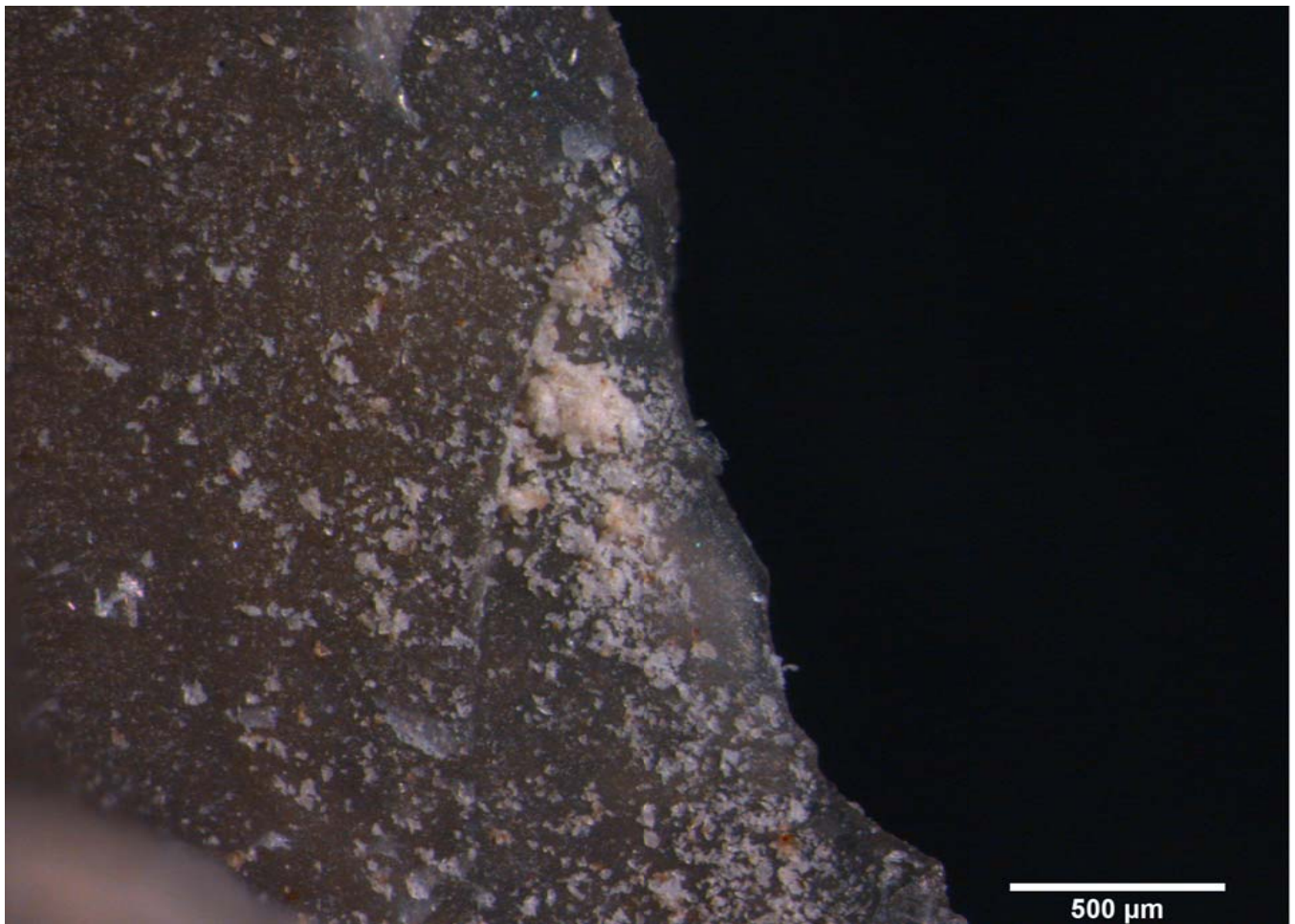
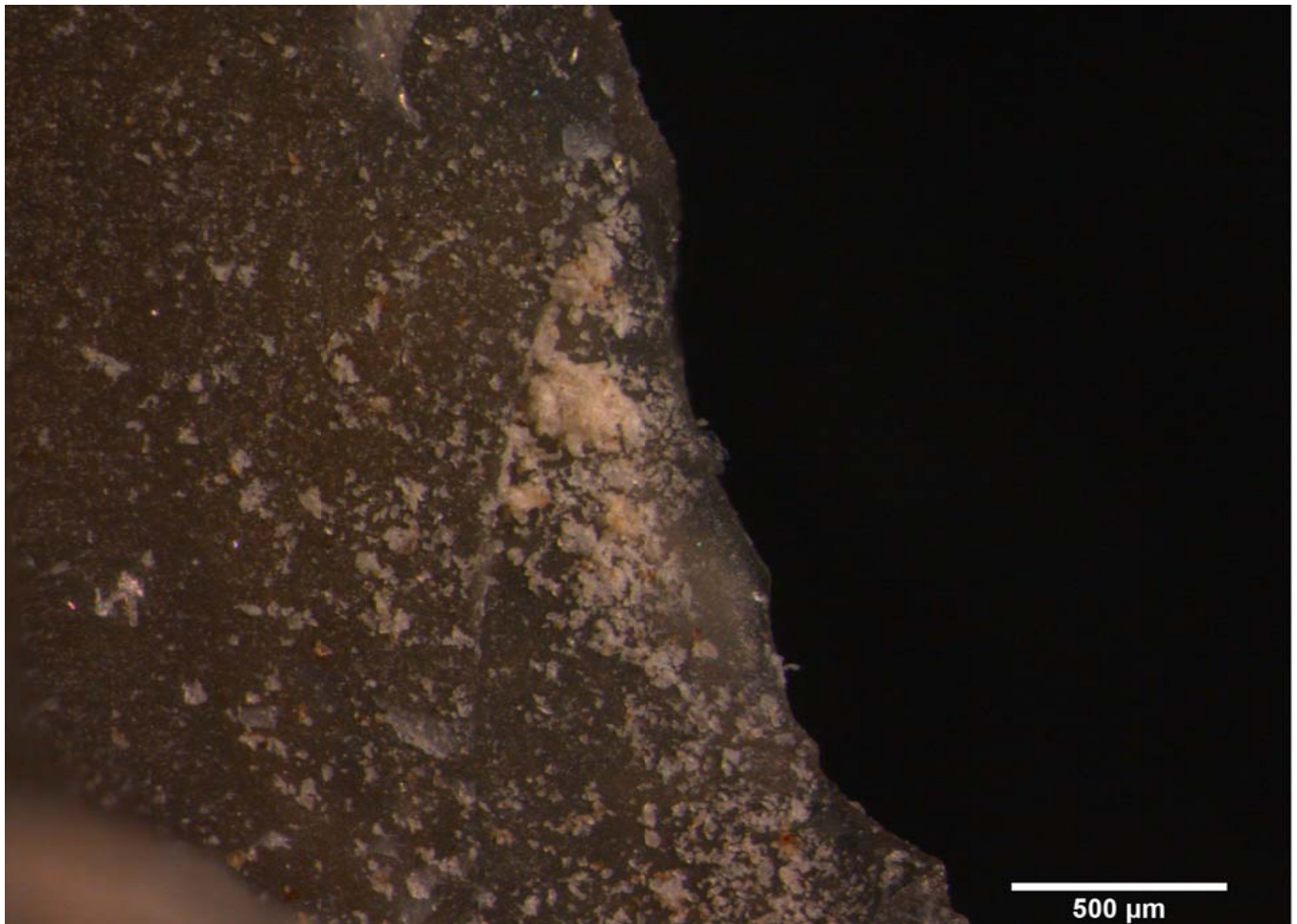


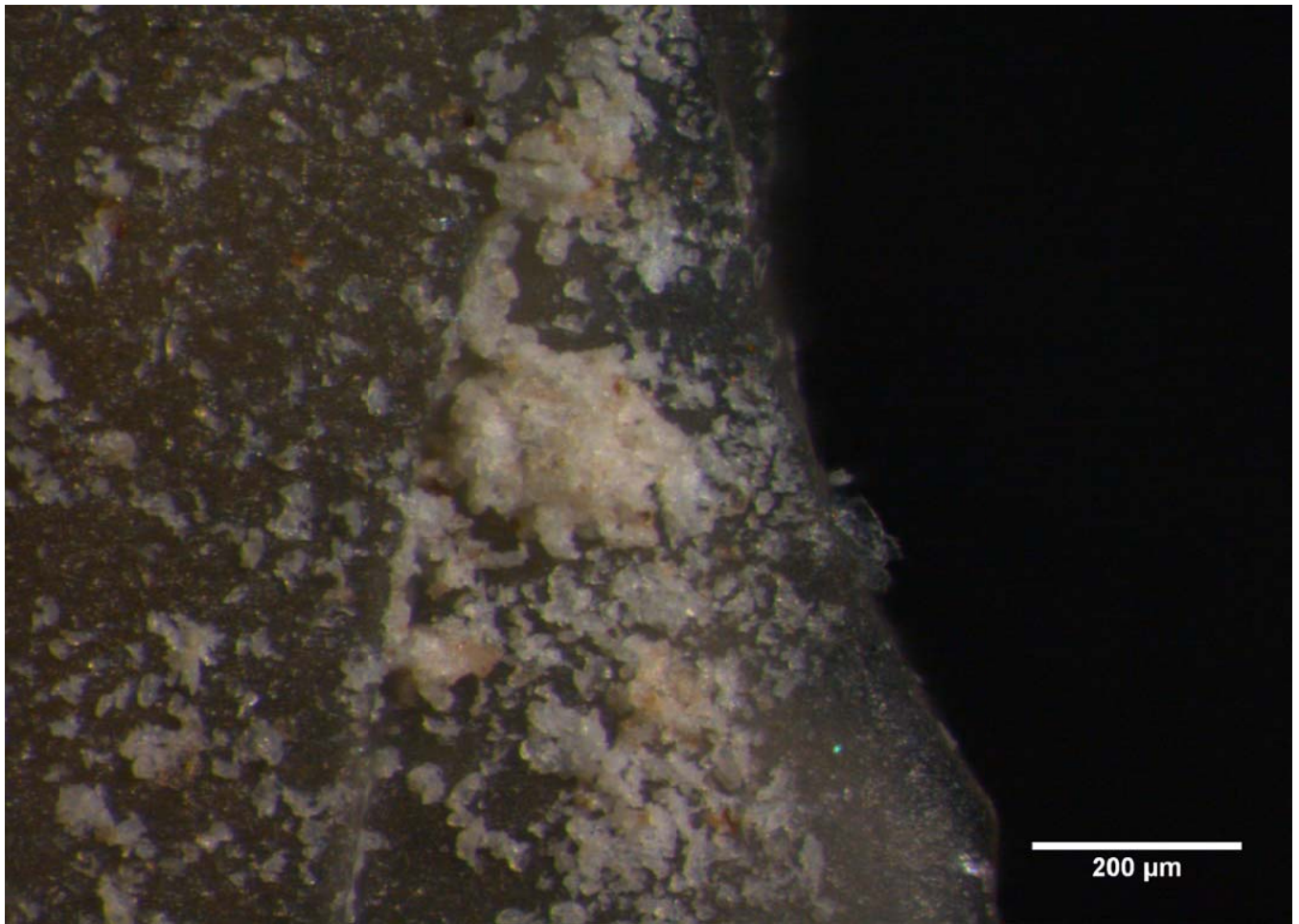


Blind Test 1

Residue 13Db

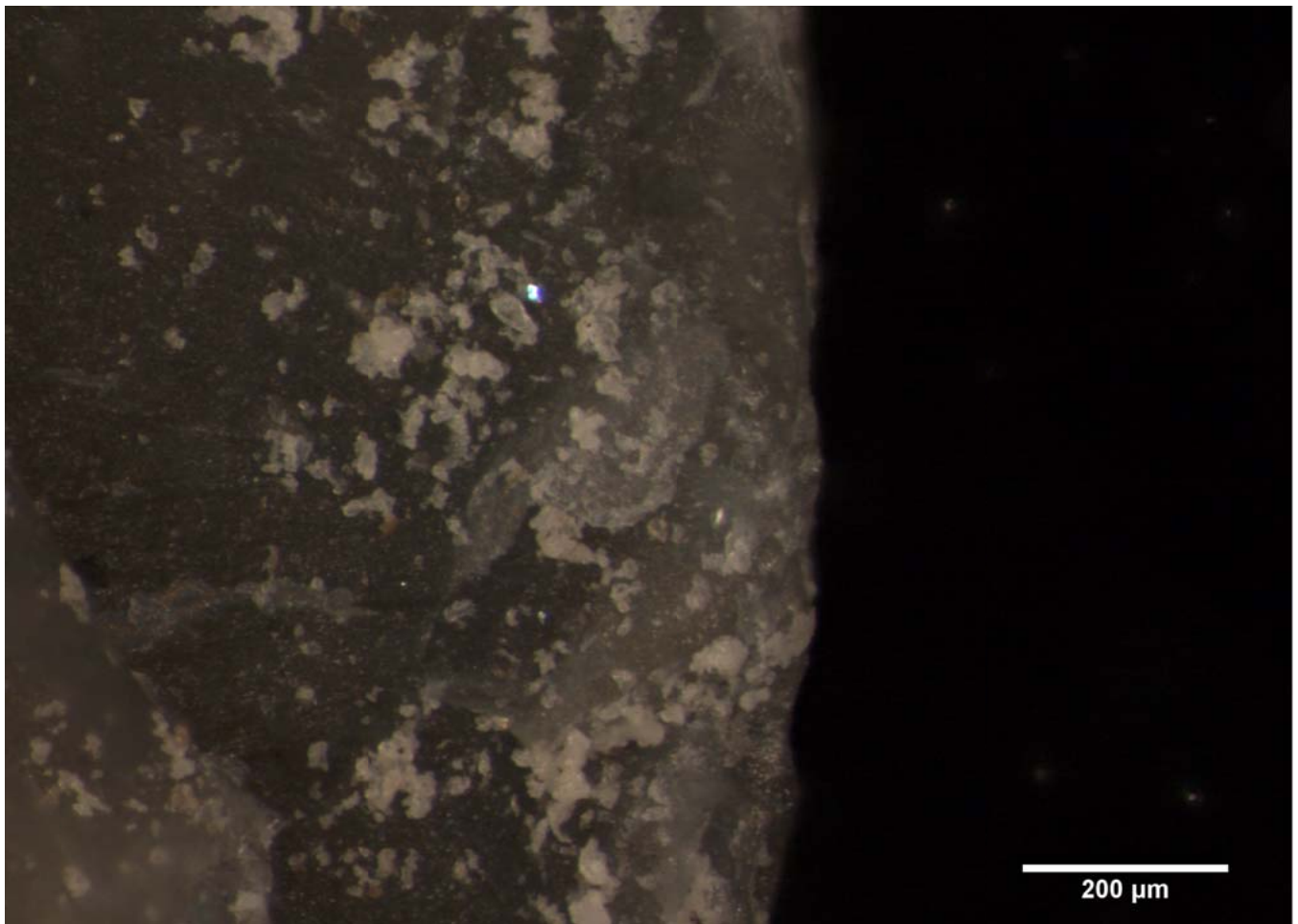
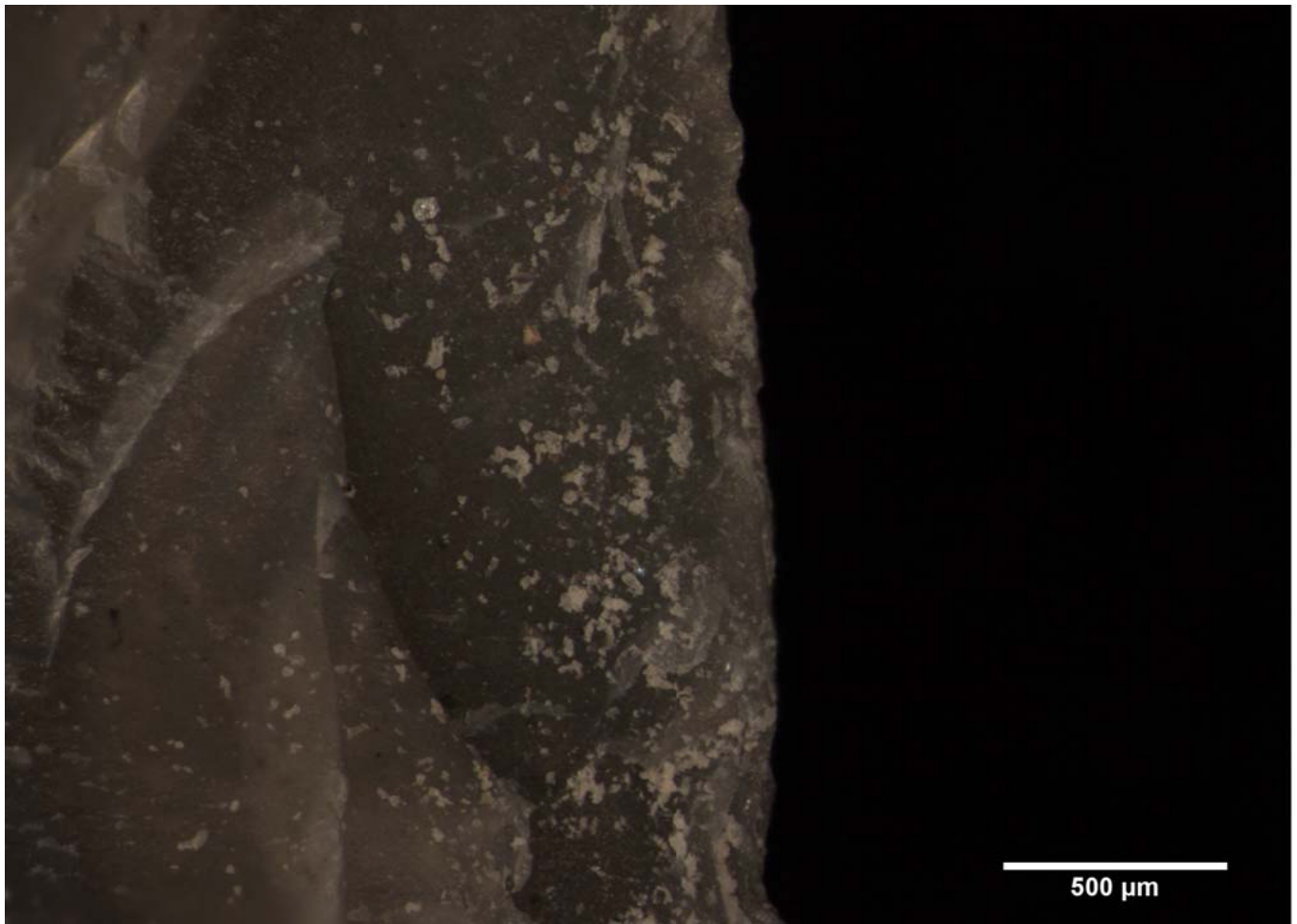


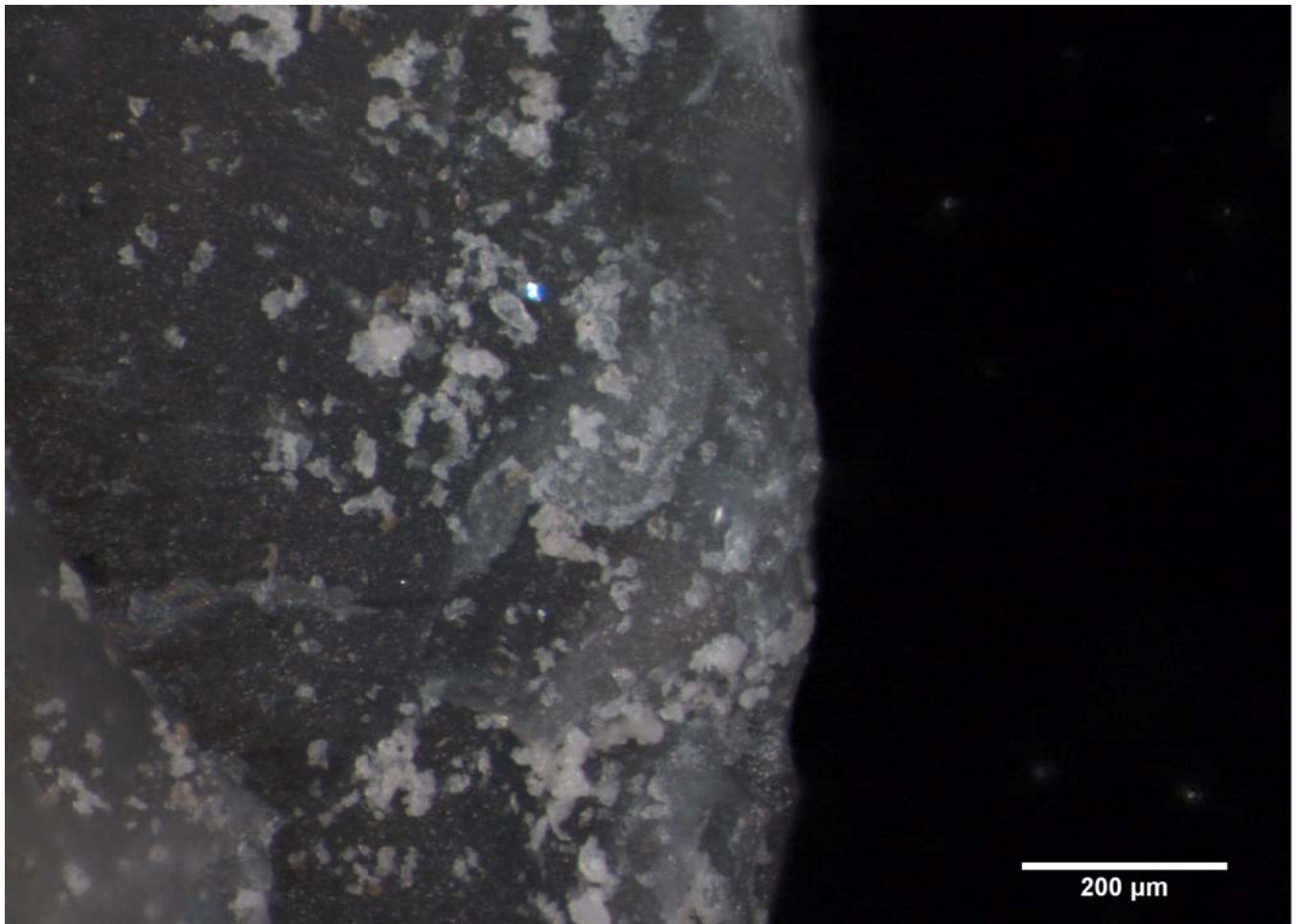




Blind Test 1

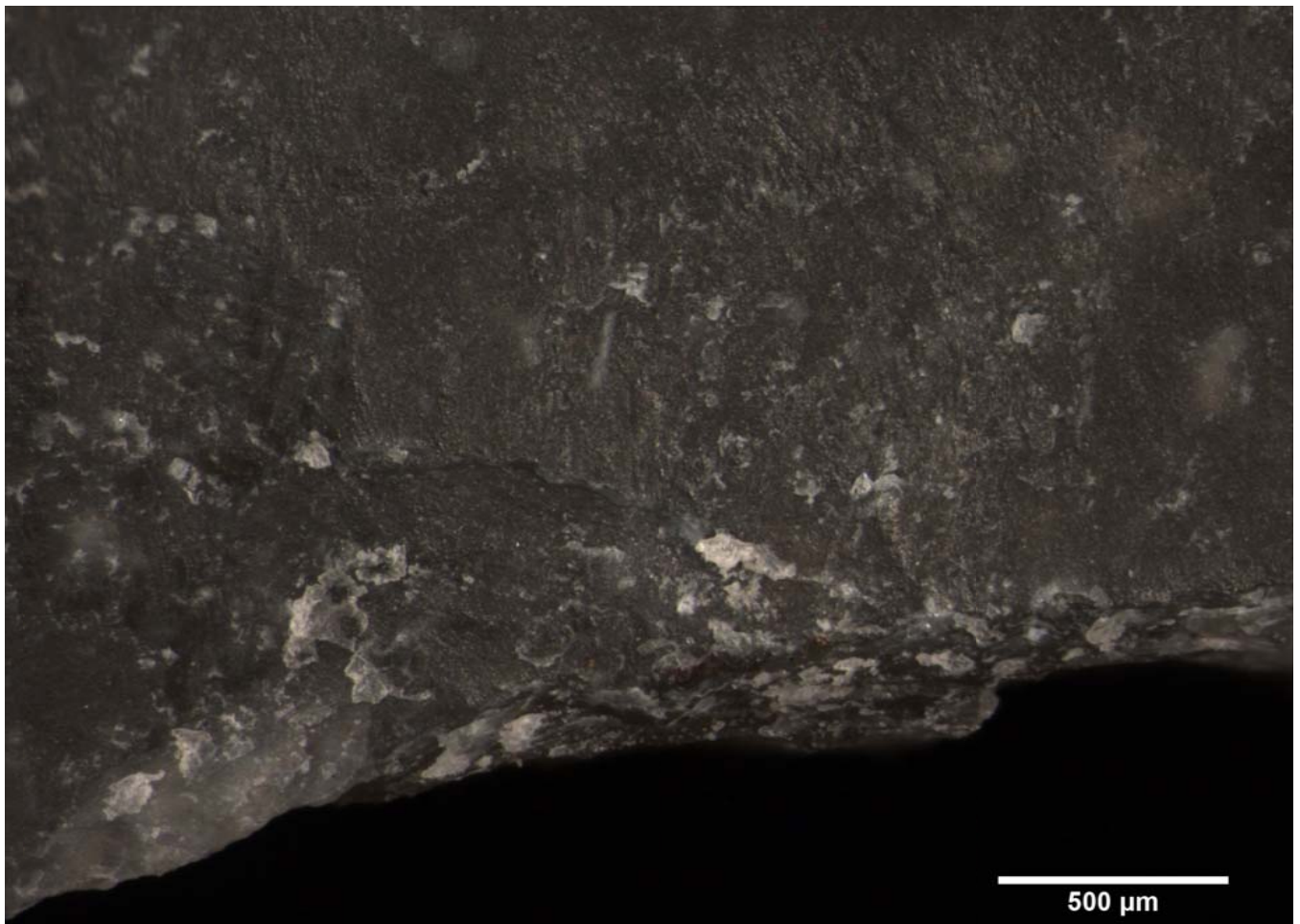
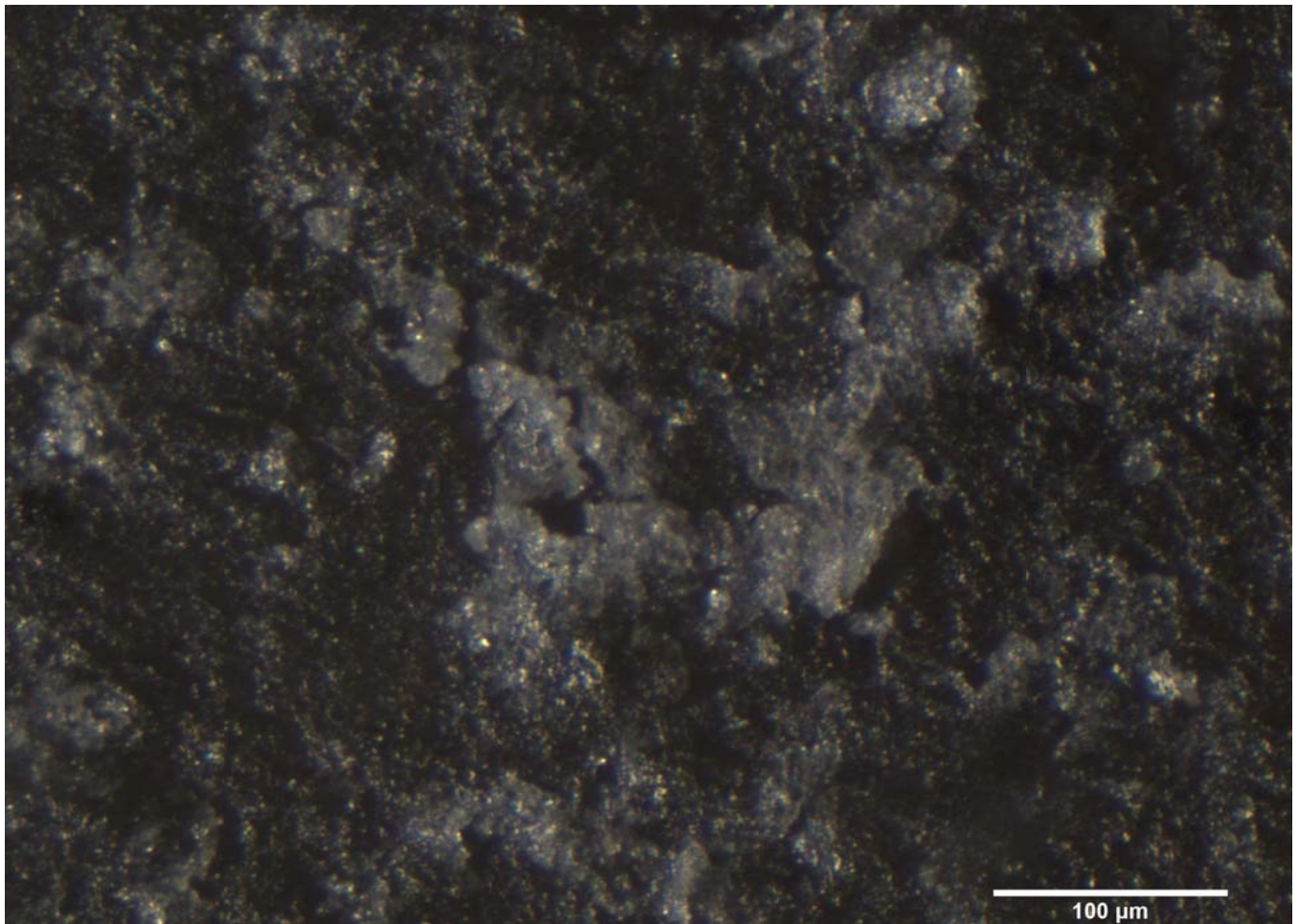
Residue 13Dc

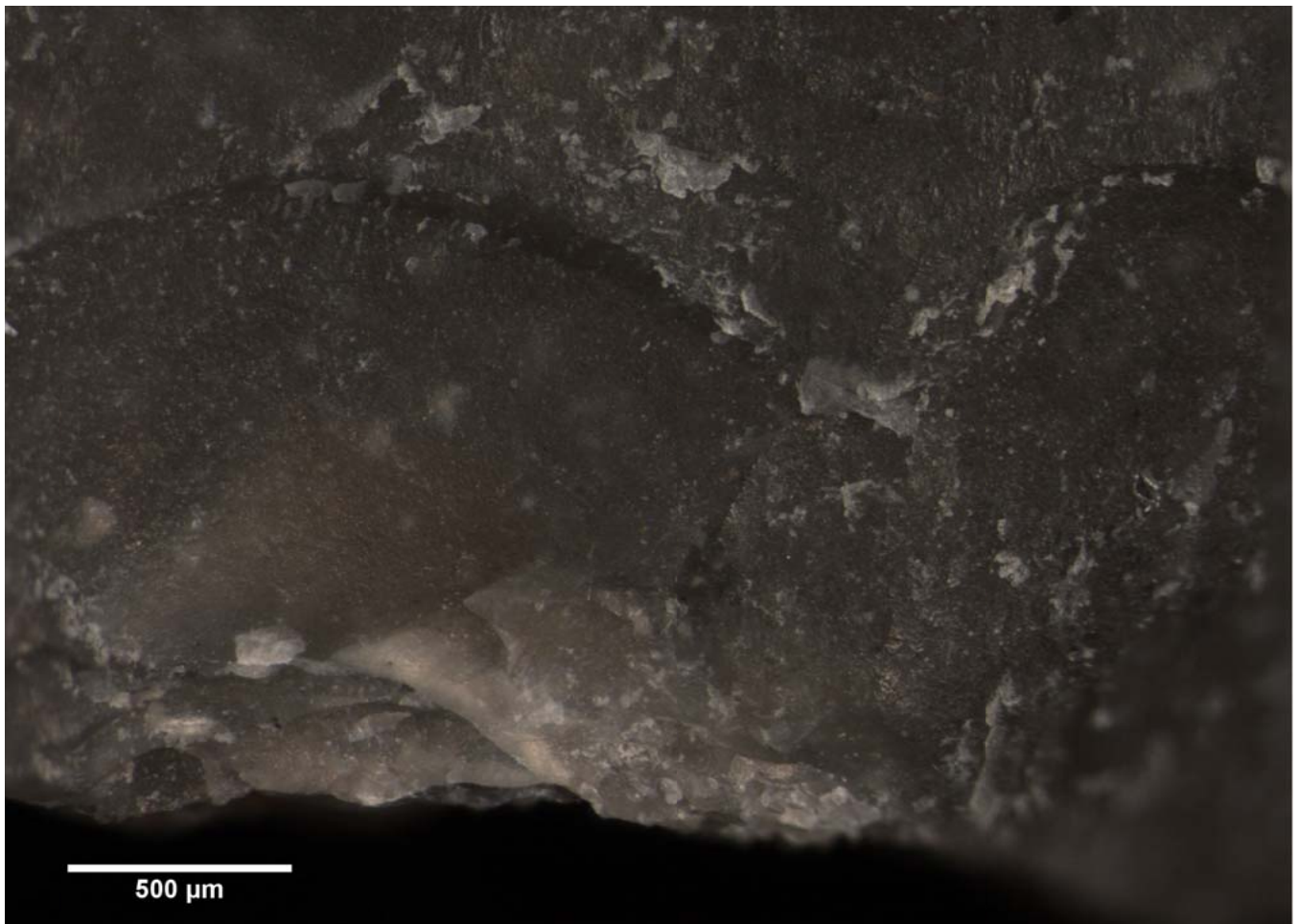
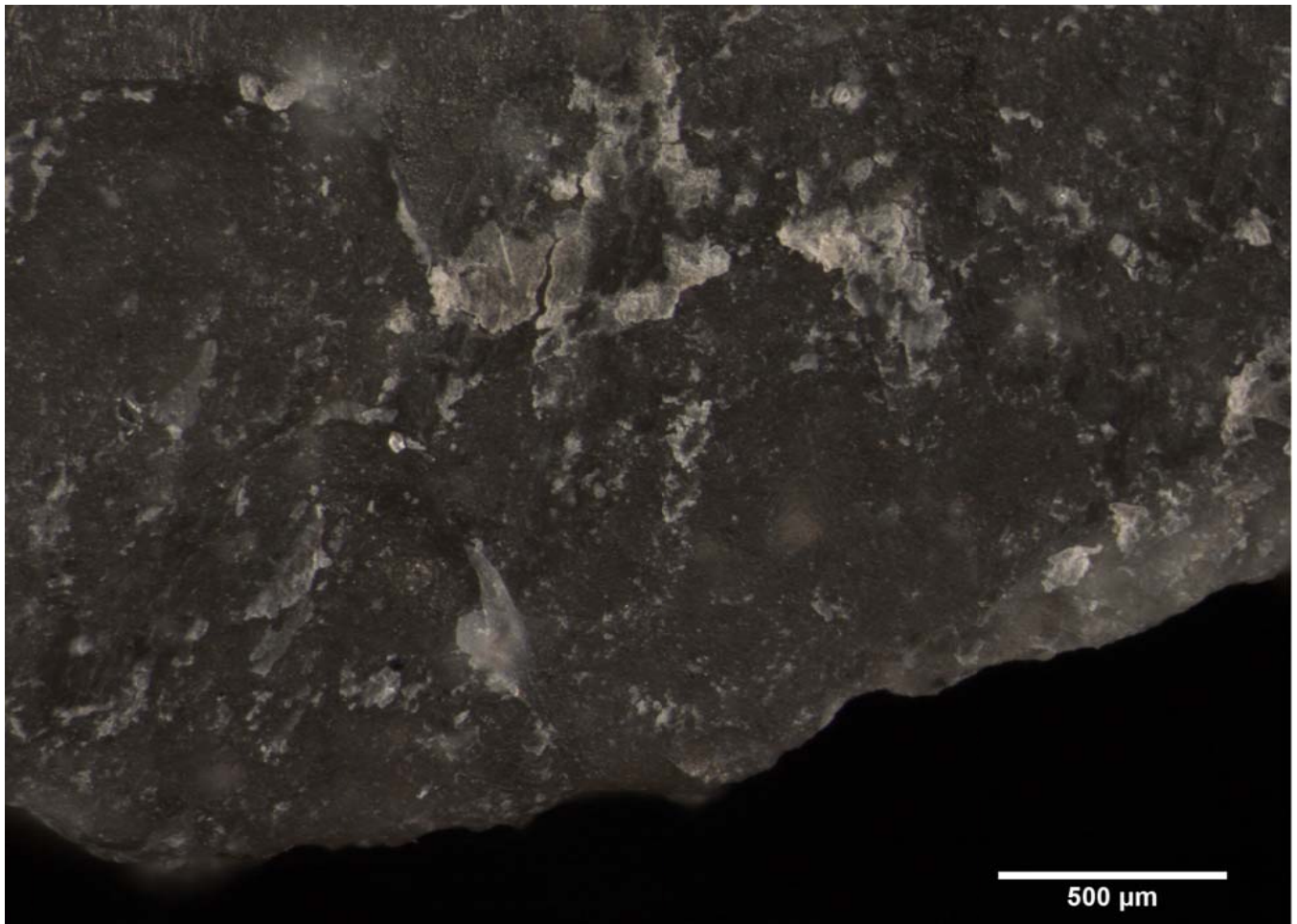


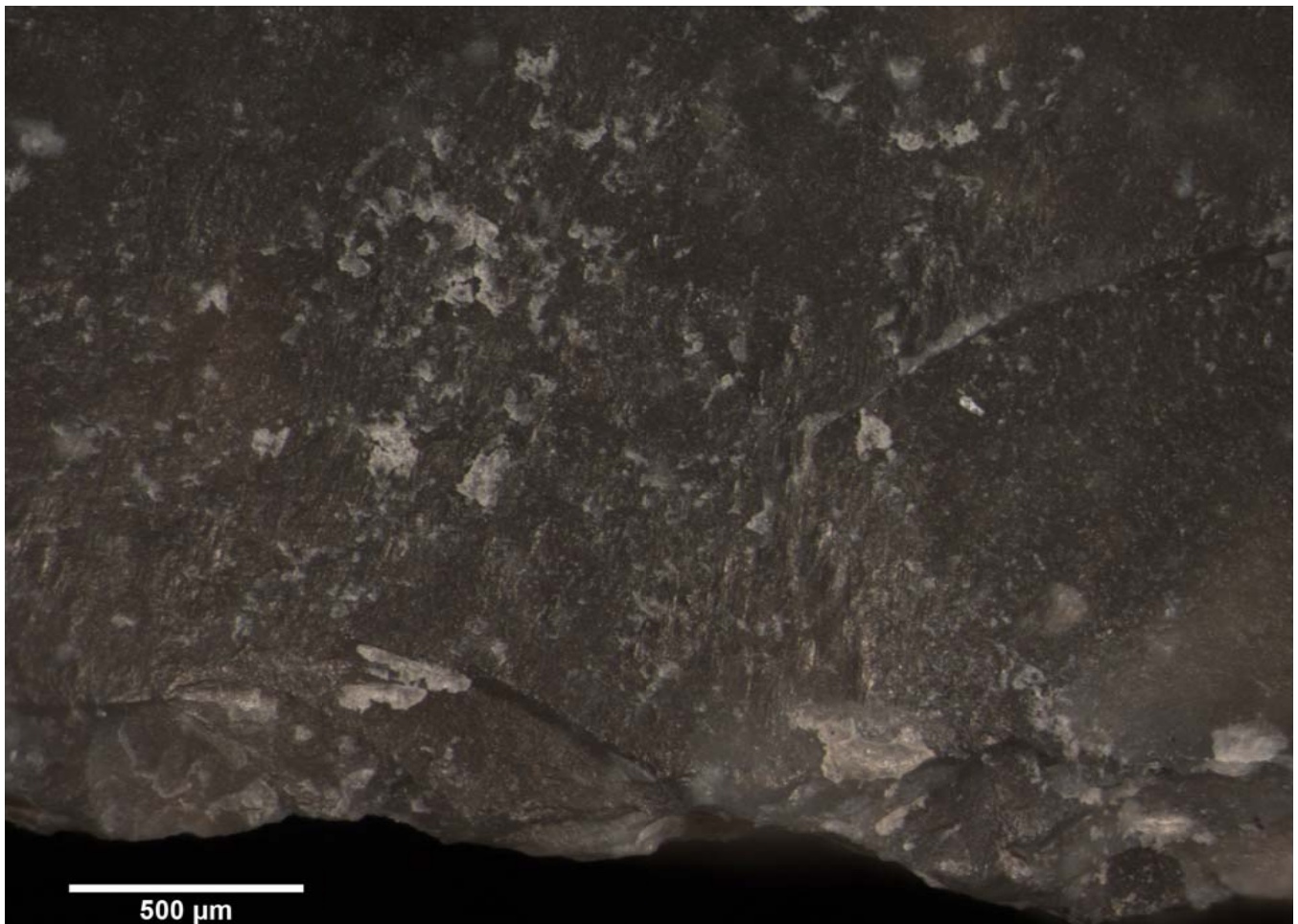
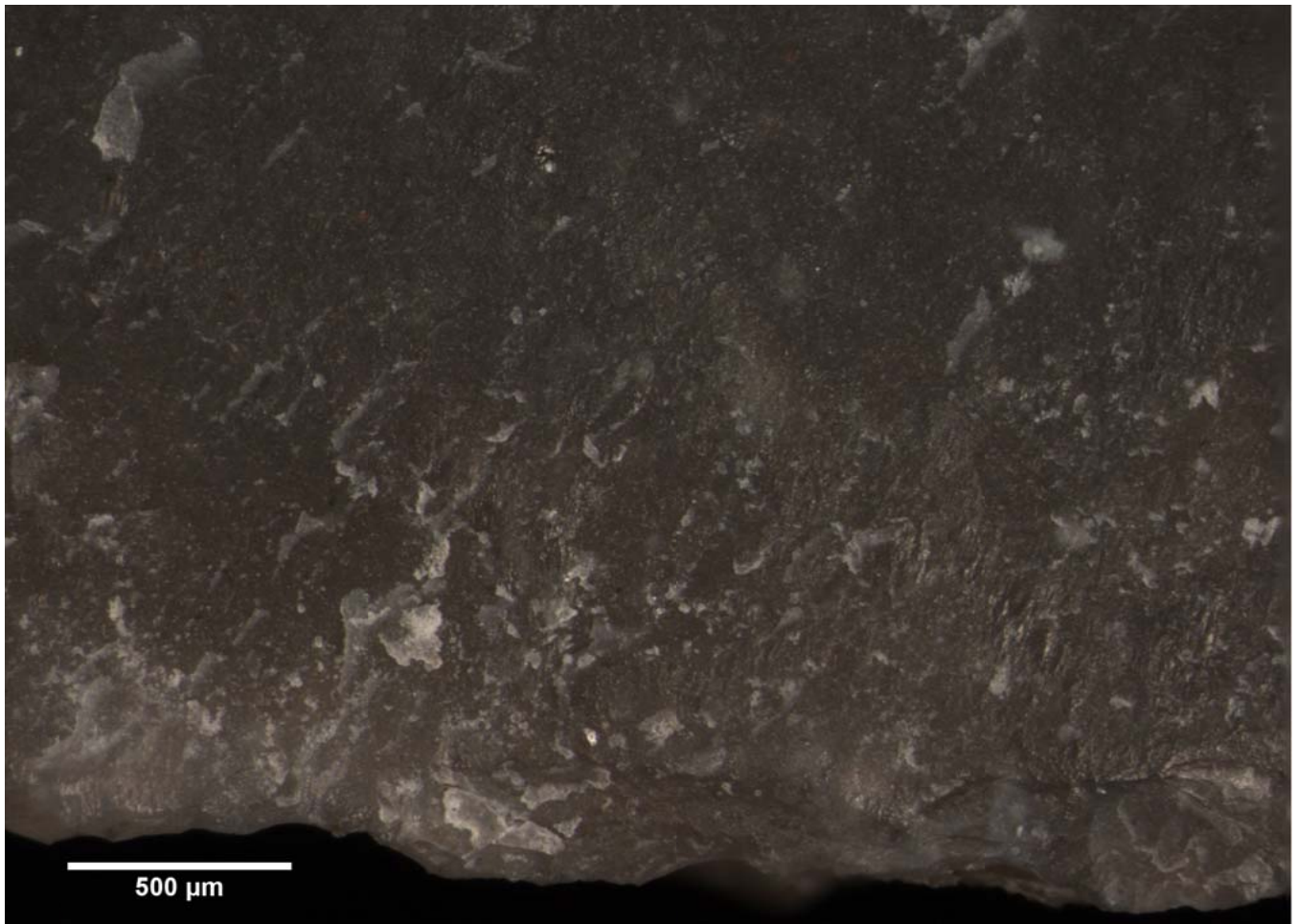


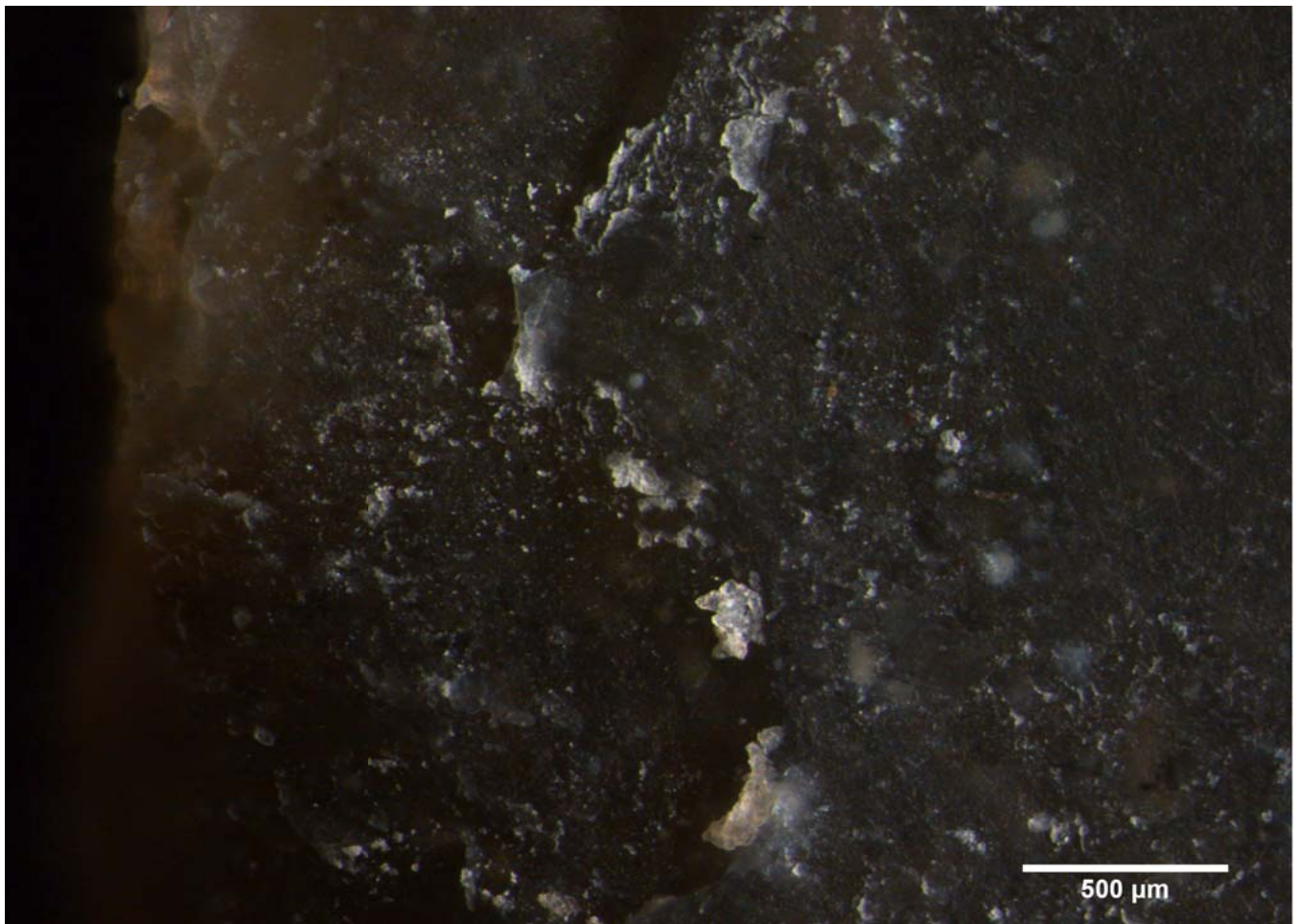
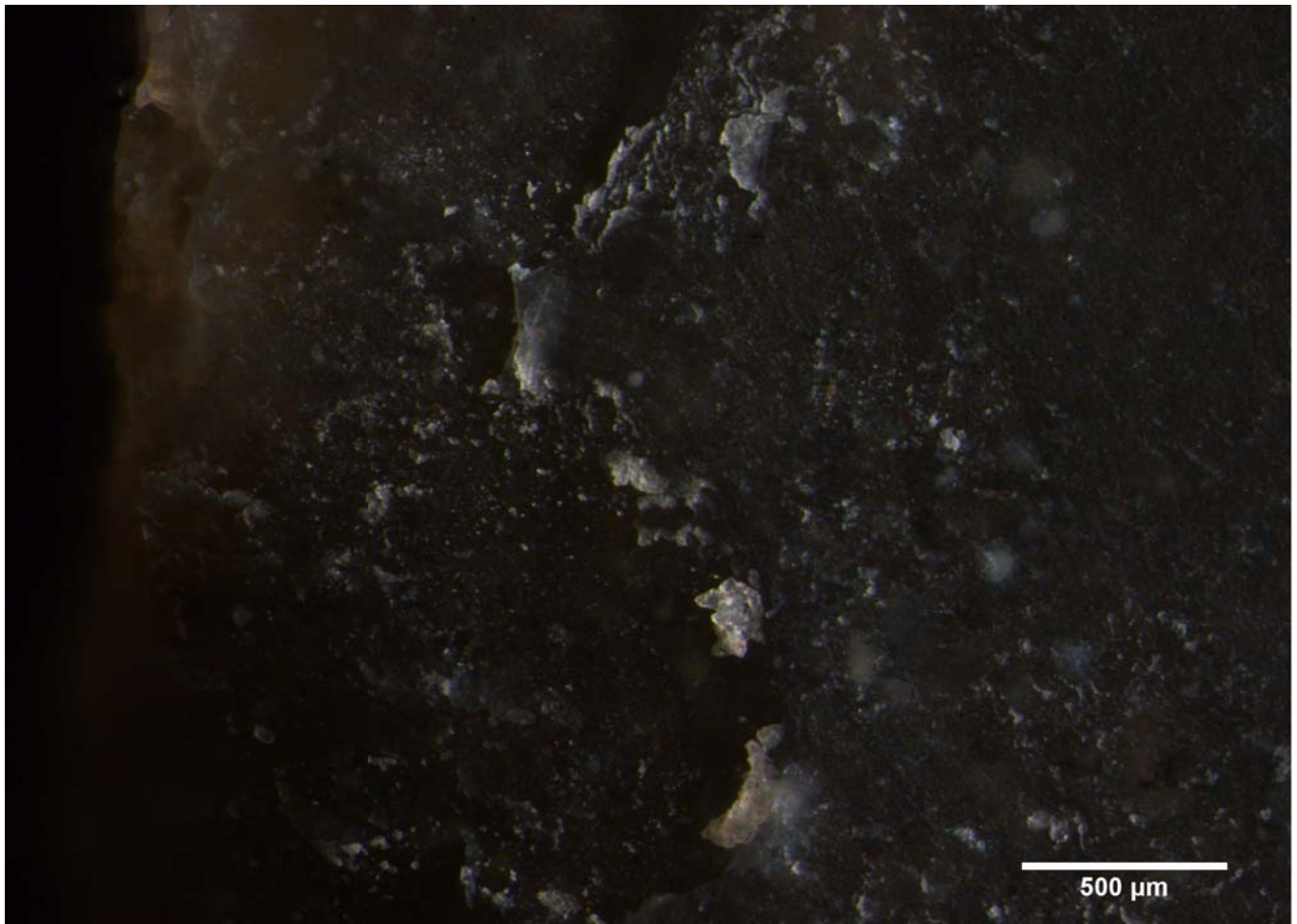
Blind Test 1

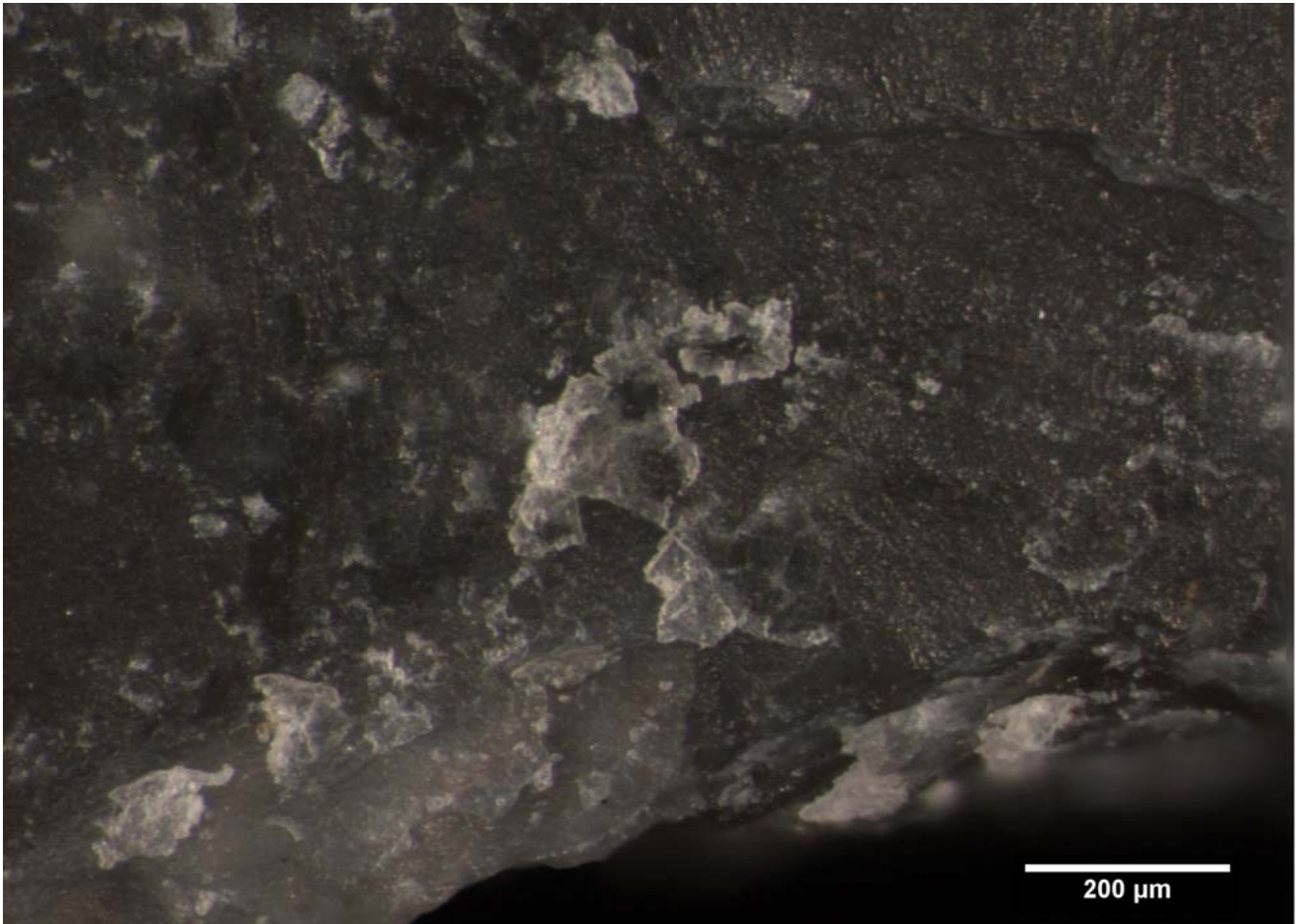
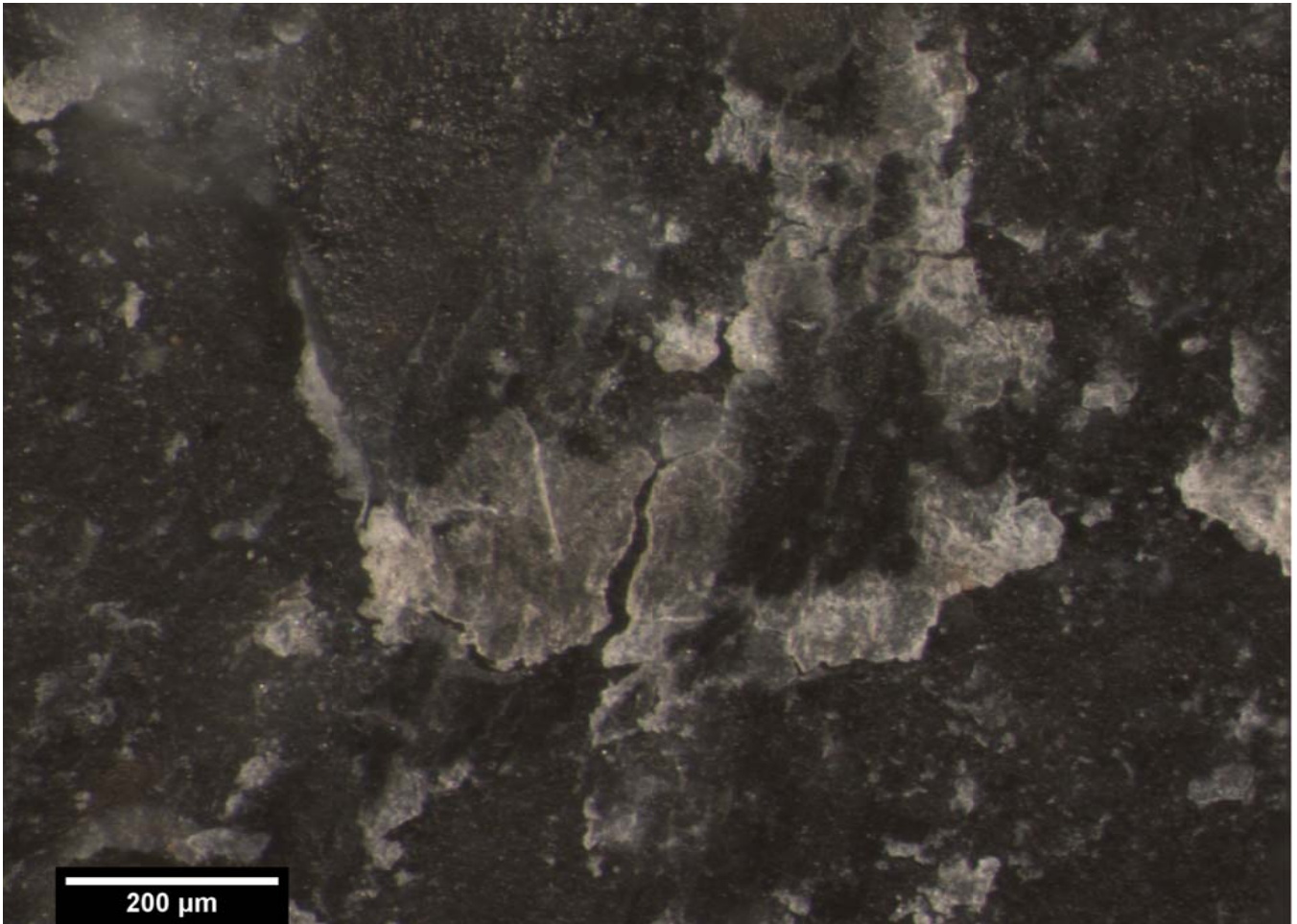
Residue 13Va

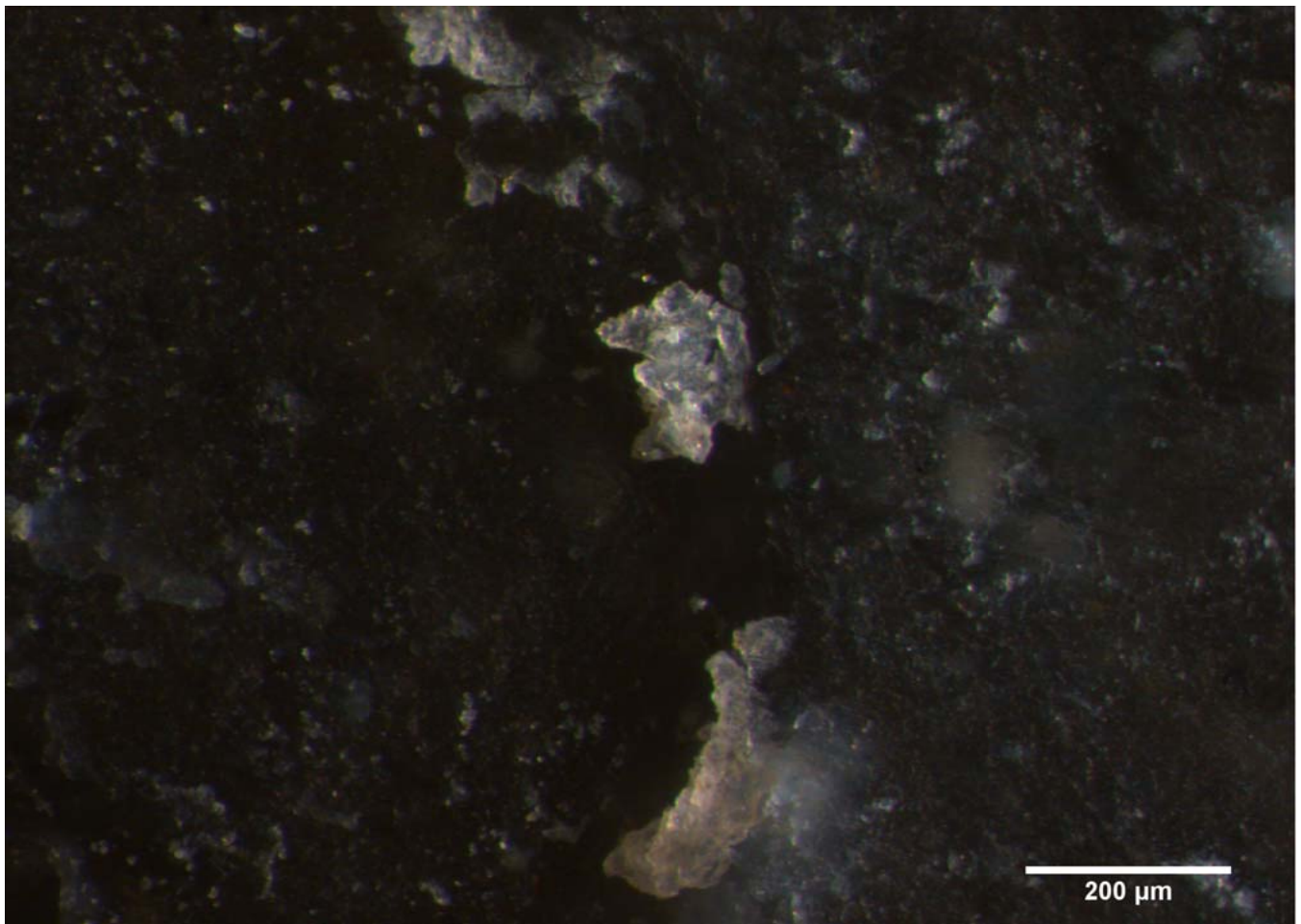
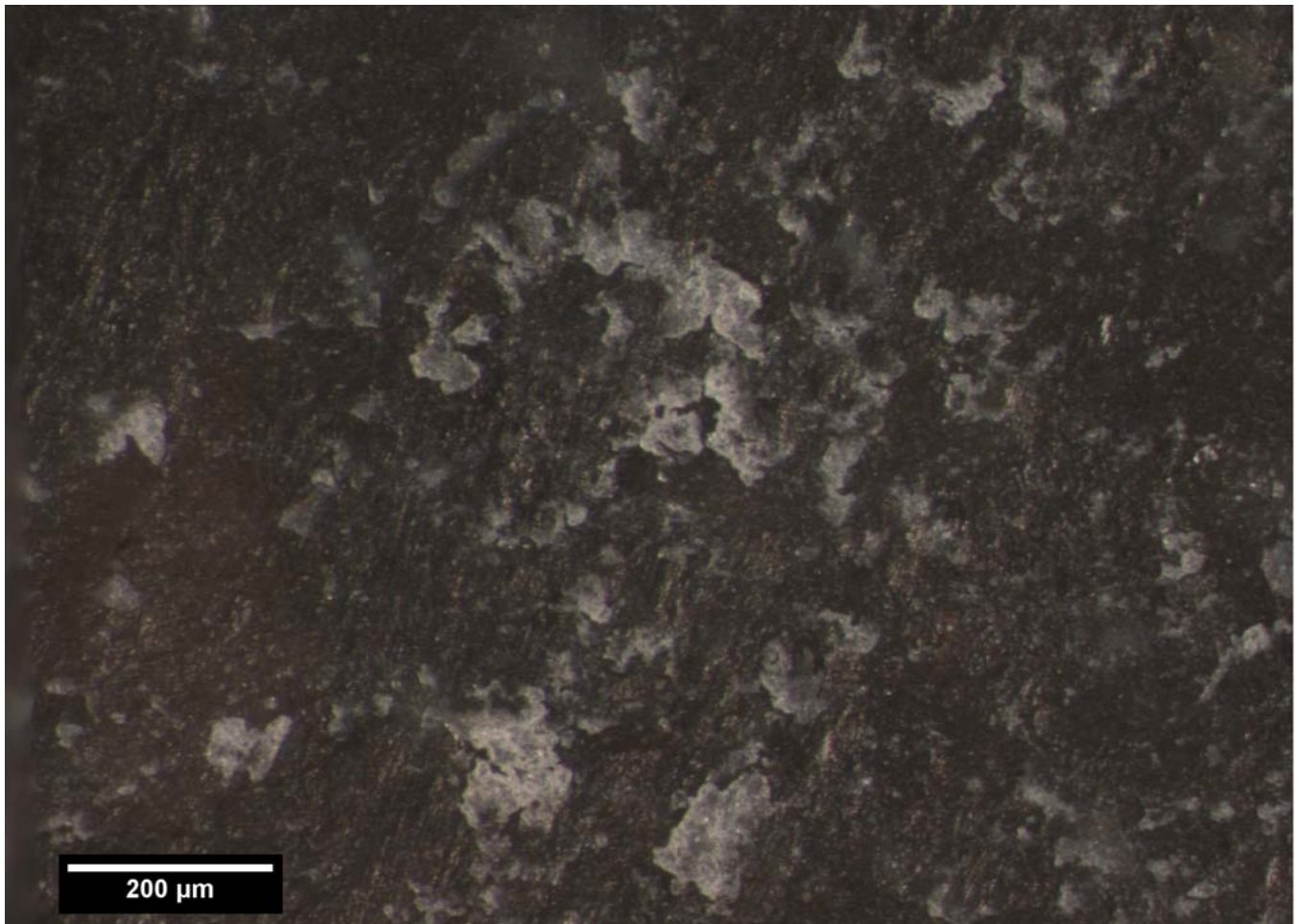












Blind Test 1

Residue 13Vb

